

Endeavour Foundation
Business Excellence and Impact Awards
Celebrating Innovation, Leadership, and Inclusion



70's Illusion 1 (2023) by Jarrod Wendt

Nomination
Pack

**The Endeavour Foundation
Business Excellence and Impact Awards**
are brought to you with thanks to the
generous support of our sponsors

Major Event Partner



Event Partners



COTTON:ON

Deloitte.

R Y D G E S

SOUTH BANK BRISBANE

About the Awards

We invite you to be part of this brand-new event on the corporate social calendar!

Taking place on **Thursday 16 October 2025** at Rydges Hotel South Bank, Brisbane, the inaugural Endeavour Foundation Business Excellence and Impact Awards Luncheon celebrates diversity and inclusion in the workplace by acknowledging the collective achievements made through commercial partnerships.

Each and every day, at 50 sites nationwide, more than 1,700 Endeavour Foundation employees with disability produce consistently excellent work and are proud to contribute to the Australian workforce. It's time to celebrate this quiet achievement along with the businesses who support these important commercial enterprises, providing opportunity and career pathways to people with disability.

Key Dates

Monday 16 June

Nominations open and event tickets available

Friday 25 July

Nominations close

Week Commencing 8 September

Finalists announced

Thursday 16 October

Awards Ceremony and Luncheon at Rydges Hotel South Bank, Brisbane
11:30am to 3pm
where winners will be announced



Award Categories

Results that Shine Award

This award recognises the Endeavour Foundation social enterprise site that consistently delivers high-quality work coupled with a focus on individual employee development and skill-matching.

CBC Group Partnership Excellence Award

This award recognises strong partnerships with clear shared goals, focusing on improving employment outcomes for individuals with disability through innovative support and sustainable efforts.

Advocacy in Action Award

This award honours media campaigns that effectively raise awareness, influence public perceptions of disability inclusion and engage a wide audience to inspire positive change.

Charity Champion Award

This award recognises organisations that provide significant financial and/or in-kind contributions, directly impacting the work of Endeavour Foundation, and demonstrating ongoing commitment to supporting its mission and objectives.

Community Leadership Award

This award recognises organisations that offer diverse support in multiple areas, maintains a long-term relationship, and demonstrates leadership in promoting disability inclusion and community engagement.

The awards will be presented at a special ceremony and luncheon on **Thursday 16 October 2025** at Rydges Hotel South Bank, Brisbane. 11:30am to 3pm. All winners will receive an engraved trophy.

Everyone's invited: employees, families, carers, people we support, partners and the general public. Tickets are available to purchase when the nominations open.

This is your chance to champion and celebrate those that drive diversity and inclusion and say thank you. We look forward to receiving your nominations!



Award Categories

About the Process

- ➔ To complete the nomination form you will need details (full name, email address and phone number) of a Manager, Supervisor or Employment Coach based at the site or a contact at the organisation you are nominating.
- ➔ You will also need to include your details (full name, email address and phone number).
- ➔ Please also make sure you have told the contact person that you are nominating the organisation for the award. We will also send them an email when you finish the nomination.
- ➔ All nominations must be completed via the online forms. Each award category has its own online nomination form.

Helpful Tips

You need to answer all questions on the form.

The questions have a word limit so please try to answer each question directly without adding too many extra words.

Give specific examples that will help to demonstrate what you are saying.



Award Categories

Results that Shine Award

This award recognises the Endeavour Foundation social enterprise site that consistently delivers high-quality work coupled with a focus on individual employee development and skill-matching.

Evaluation Criteria

1. **Quality of Work:** The social enterprise site has clear processes to make sure its work is always high quality. There are good systems in place - like testing, reviews, or checklists - to check for quality. There are strong examples of high standards, such as successful projects, services, awards, or positive results and feedback.
2. **Customer Satisfaction:** There is clear, positive feedback from customers or business partners showing the site's strong performance. This may include testimonials, survey results, or other feedback that demonstrates satisfaction. Evidence of improvements or positive changes resulting from the site's work can be provided.
3. **Workforce Development:** The site provides strong support for employee learning and career growth. There are clear opportunities for employees to develop new skills - such as training programs, mentoring, or courses. Examples show how these efforts have helped employees build their skills or advance in their careers.

CBC Group Partnership Excellence Award

This award recognises strong partnerships with clear shared goals, focusing on improving employment outcomes for people with disability through innovative support and sustainable efforts.

Evaluation Criteria

1. **Collaboration:** The social enterprise site and partner work together effectively as a team. There are clear examples of strong collaboration, such as open communication, joint problem-solving, and running projects together. Evidence shows how their teamwork leads to better results or improvements.
2. **Employment Outcomes:** The social enterprise site and partner work together to help people with disabilities secure and retain jobs. Evidence includes job placements, retention, promotions, and positive outcomes supported by data or examples.
3. **Innovation in Support:** The partnership has introduced new ideas or programs - such as strategies, technology, or training - that have improved job outcomes for people with disabilities. Clear examples show their positive impact.

Award Categories

Advocacy in Action

This award honours media campaigns that effectively raise awareness, influence public perceptions of disability inclusion and engage a wide audience to inspire positive change.

Evaluation Criteria

1. **Public Awareness:** The media story or campaign clearly raised awareness about disability inclusion and Endeavour Foundation's work. The main message is well explained and shared through channels like TV, radio, newspapers, or social media. There is evidence of significant media coverage or positive public response.
2. **Storytelling Excellence:** The campaign or media story powerfully highlights the personal journeys and career progression of people with disabilities. It uses emotional, inspiring, or informative content such as quotes, examples, or images to make these stories stand out and resonate with audiences.
3. **Engagement:** There is clear evidence of positive public response to the story on social or other media. Examples include high engagement (such as comments, shares, or reactions), participation in campaigns, donations, or community activities. The response has led to noticeable positive actions or changes.

Charity Champion Award

This award recognises organisations that provide significant financial and/or in-kind contributions, directly impacting the work of Endeavour Foundation, and demonstrating ongoing commitment to supporting its mission and objectives.

Evaluation Criteria

1. **Financial Support/ In-Kind Support:** The organisation's financial and/or in-kind support has clearly benefited Endeavour Foundation's programs and services. Evidence includes the level of funding or in-kind contributions, the programs that were supported, any special fundraising activities led, and long-term or ongoing commitments.
2. **Commitment to Cause:** The organisation has shown ongoing, regular support for Endeavour Foundation's mission and goals. Evidence includes the length and consistency of their support, alignment of values or policies, and any special programs or commitments that demonstrate their dedication.
3. **Employee Engagement:** The organisation encourages employee involvement in volunteering, fundraising, and workplace giving, strengthening community impact and fostering social responsibility.

Award Categories

Community Leadership Award

Evaluation Criteria

This award recognises organisations that offer diverse support in multiple areas, maintains a long-term relationship, and demonstrates leadership in promoting disability inclusion and community engagement.

1. **Long-term Relationship:** The organisation has maintained a strong, long-term relationship with Endeavour Foundation shown by years of involvement, major achievements, ongoing commitments, and regular joint programs or projects.
2. **Community Impact:** The organisation has helped make the community more inclusive and created opportunities for people with disabilities. Evidence includes programs, events, or policies that improved accessibility or inclusion, teamwork with others, awareness campaigns, or initiatives that led to positive changes or more opportunities for people with disabilities.
3. **Leadership in Social Responsibility:** The organisation has demonstrated leadership in disability inclusion and social responsibility through advocacy, inclusive practices, public commitments, or awards. Evidence includes examples of influencing others, setting clear goals, and integrating inclusion into their strategy or culture.



Conditions of Entry

Nomination Form

All nominations must be completed via the online forms. All submissions must respond to the evaluation criteria questions in their category on the nomination form.

All content in your submission must be true and correct.

Where applicable, in the nomination form, you can upload documents, images, files to support your submission.

Eligibility

You can nominate an organisation/company/business partner that helps people with disability. This could be an organisation that assists people in one of our social enterprise sites, supported disability accommodation, learning and lifestyle hubs for example. You can nominate a social enterprise site that is run by Endeavour Foundation. For one of the awards, you are asked to nominate an individual or group of individuals. This is an individual/s who have made a positive contribution or impact for people with disability.

All Endeavour Foundation sites are eligible to be nominated, with the exception of those under government contracts due to restrictions on financial transactions. In addition, commercial partners, suppliers and sponsors are eligible and encouraged to participate.

The Process

Only fully completed applications that adhere to all conditions will be judged. It is important that you advise the organisation/company/business partner/individual that you are nominating them for an award as you will need their contact details to include in the nomination. We will also send them a confirmation email advising of the award nomination.

A short-list of finalists will be selected from each category. Winners will be announced at the awards ceremony and luncheon on Thursday 16 October 2025.

Award Winners

Each award winner will be presented with - an engraved trophy at the ceremony and luncheon on Thursday 16 October 2025.

Visit fundraise.endeavour.com.au/event/business-awards to complete your nominations.

More Information

Nicola Spencer

Corporate Partnerships Specialist
partnerships@endeavour.com.au

Meet the Judges



Avril

Avril Livingstone is first-and-foremost 'Mum' to Heather who has been supported through Endeavour Foundation for over 10 years. Avril first took part in the Great Endeavour Rally in 2017 and has been an integral part of the 'Rally family', along with husband Jimmy. Together they have raised and donated over \$400,000 to Endeavour Foundation!



Jane

Jane is Receptionist and Administration Officer at Endeavour Foundation and is looking forward to being part of the judging panel because she loves learning about other people.



Madison

Maddie is a supported independent worker through Endeavour Foundation's Support Centre hosted employment program. She is looking forward to being on the panel because it's something new and exciting to get involved with.



Warren

As a long-standing partner and supporter of Endeavour Foundation, smartMonday's Warren Peppin has a passion for retirement planning and his mantra is, 'planning and acting is the key to success'. Warren is often seen at Endeavour Foundation's key locations, hosting information sessions for staff and supported employees.



Wendy

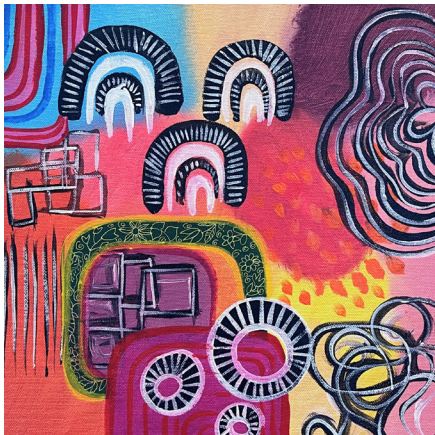
Appointed to Endeavour Foundation's Board of Directors in April 2024, Wendy Zernike's commitment to continuous improvement, strategic performance and focus on active community participation, aligns seamlessly with the Endeavour Foundation Business Excellence and Impact Awards.



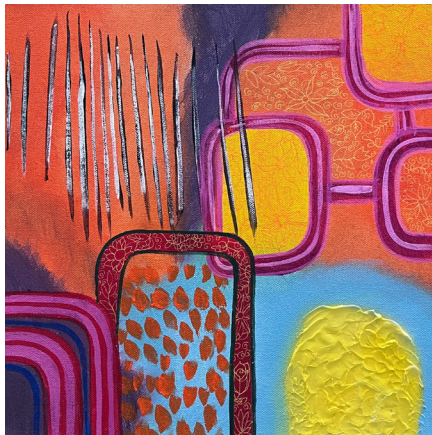
Zoe

Zoe Harrison is People and Culture Manager at Rydges Hotel South Bank, Brisbane, Event Partner of the Endeavour Foundation Business Excellence and Impact Awards. Zoe witnessed the importance of Endeavour Foundation's inclusive social enterprises when she and her team visited Endeavour Foundation's Geebung Social Enterprise in April this year.

About the Artist



70's Illusion 1 (2023)
acrylic on canvas, 30cm x 30cm



70's Illusion 2 (2023)
acrylic on canvas, 30cm x 30cm



70's Illusion 3 (2023)
acrylic on canvas, 30cm x 30cm

We are proud to feature the artwork of Jarrod Wendt as part of the inaugural Endeavour Foundation Business Excellence and Impact Awards Luncheon. The vibrant design showcased across all our awards materials—both online and in print—was beautifully created by Jarrod, one of QArt's many talented artists. We are honoured to celebrate Jarrod's creativity and share his inspiring work with our community through this special event.



About Jarrod's Artwork

Jarrod explores fine lined work through painting and ceramics. He captures a range of imagery, including animals, plants and intricate patterns, conveying his ideas through detailed work.

About QArt

QArt Gallery and Studio by Endeavour Foundation, is a social enterprise, which provides employment, mentoring and training for professional artists with intellectual and physical disability. We are an innovative and forward-thinking organisation, who provides a supportive environment for artists. The studio works with artists of all abilities, providing them with the resources and support they need to create and showcase their work. Building a sense of community and fostering a culture of kindness and compassion.



qart.endeavour.com.au